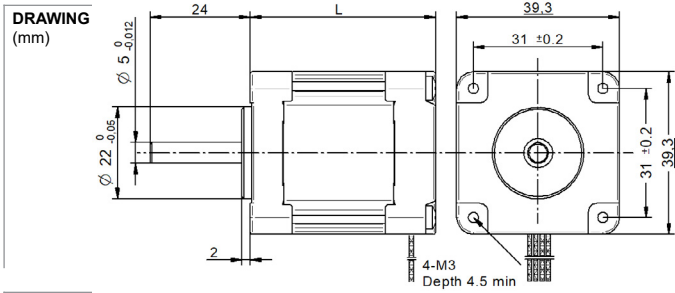


SHW39-09 Series 39 mm



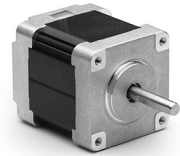
MODEL NAME DESIGNATION

SHW3520 - STEP ANGLE - CURRENT

Example: SHW35-09-100



PHOTO



OPTIONS MOTOR DRIVERS AND POWER SUPPLIES



MOTOR FEATURES

| | |
|-----------------------|-------------------------|
| Step angle | 0.9 |
| Step angle accuracy | ± 5% full step no load |
| Shaft material | X8CrNiS18-9 303 |
| Bearing type | Ball bearing |
| Radial play | 0.02 mm 450 g |
| Axial play | 0.08 mm 450 g |
| Max. radial force | 28N 20 mm from shaft |
| Max. axial force | 10N |
| Dielectric strength | 600VAC 1 sec. |
| Insulation resistance | 100MΩ 500VDC |
| Ambient temperature | -20° - (+50°) |
| Insulation class | Class B |
| IP rating | IP30 |
| Connection leads | UL 1430 AWG26 300 mm |
| Connector | Not in standard version |

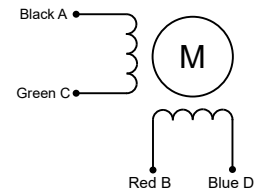
CUSTOMIZATION EXAMPLES

- Shaft configurations
- Bearing type and preload
- Temperature range
- IP rating
- Winding and performance optimization
- Cabling and harness
- Gear box to motor combinations
- Encoder to motor combinations

OPTIONS

- Stepper motor drivers Transmotec DS series
- Power supplies Transmotec LRS series

EXCITATION SEQUENCE TABLE



| CW | A | C | B | D |
|----|---|---|---|---|
| 1 | ● | | ● | |
| 2 | | ● | ● | |
| 3 | | ● | | ● |
| 4 | ● | | | ● |
| 1 | ● | | ● | |

● = + Polarity

MOTOR DATA

| | | | | |
|--------------------------------|----------------|--|--|--|
| Graph | A | | | |
| Motor model | SHW3944-09-028 | | | |
| Holding torque mNm | 297 | | | |
| Detent torque mNm | 20 | | | |
| Rotor inertia gcm ² | 36 | | | |
| Current phase A | 0.28 | | | |
| Resistance phase Ω | 60.00 | | | |
| Inductance mH | 145 | | | |
| Length mm | 44.5 | | | |
| Weight Kg | 0.290 | | | |

SPEED | TORQUE PERFORMANCE GRAPH PULL OUT

| | | | | |
|--------------------|------|--|--|--|
| Graph | A | | | |
| Supply voltage VDC | 24 | | | |
| Current phase A | 0.35 | | | |
| | | | | |
| | | | | |
| | | | | |
| | | | | |
| | | | | |
| | | | | |
| | | | | |

